

## 高速立式 綜合加工中心機



### VMC-1060

Extra Large Linear Ways on Base  
12,000 / 15,000 rpm Direct Drive Spindle.

2 超大線軌底座  
12,000/15,000 rpm 直結式高速主軸

### VMC-1060

X, Y, Z Axis Travel 1000x600x600 mm

### VMC-1160

X, Y, Z Axis Travel 1100x600x600 mm

- 12,000 rpm direct-drive high speed spindle.
- Built-in spindle 24,000 rpm / 30,000 rpm(optional).
- 30x30x18 M/min rapid traverse on X, Y, Z axis.
- Extra large 2 linear ways on base.
- AI NANO Contour Control(optional).
- Max. 600 blocks look ahead function(optional).
- Built-in Data Server.
- Full splash guard.
- BT 40 spindle taper.

### VMC-1060

X, Y, Z軸行程1000x600x600 mm

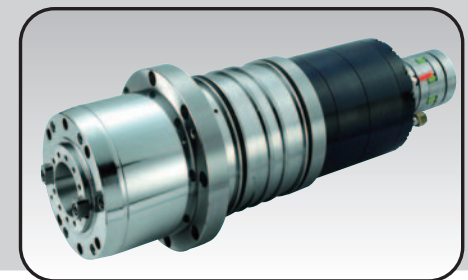
### VMC-1160

X, Y, Z軸行程1100x600x600 mm

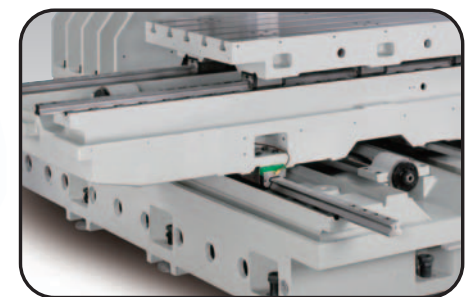
- 12,000 rpm直結式高速主軸。
- 內藏式主軸 24,000 rpm / 30,000 rpm(選購)。
- X, Y, Z軸快速進給30x30x18米/分。
- 超大2線軌底座。
- AI NANO輪廓控制(選購)。
- 最多600單節預讀功能(選購)。
- 內建資料伺服器。
- 全密閉式護罩。
- 主軸錐度BT 40。

Picture shown is direct-drive spindle.  
(Built-in type spindle is optional).

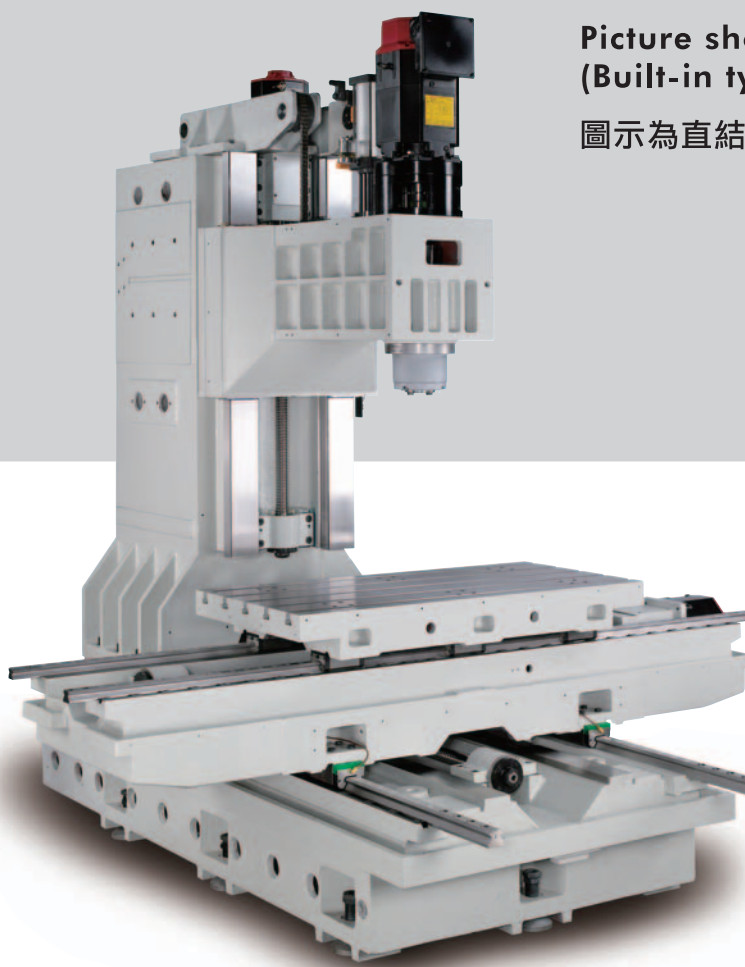
圖示為直結式 (內藏式亦可選擇)



12,000 / 15,000 rpm Direct-drive High Speed Spindle Supported by Ceramic Bearing  
12,000/15,000 rpm直結式高速主軸採用精密陶瓷軸承



Extra large 2 Linear Ways on Base  
超大2線軌底座



Stable, Rigid Machine Structure  
穩重，高剛性的機體結構